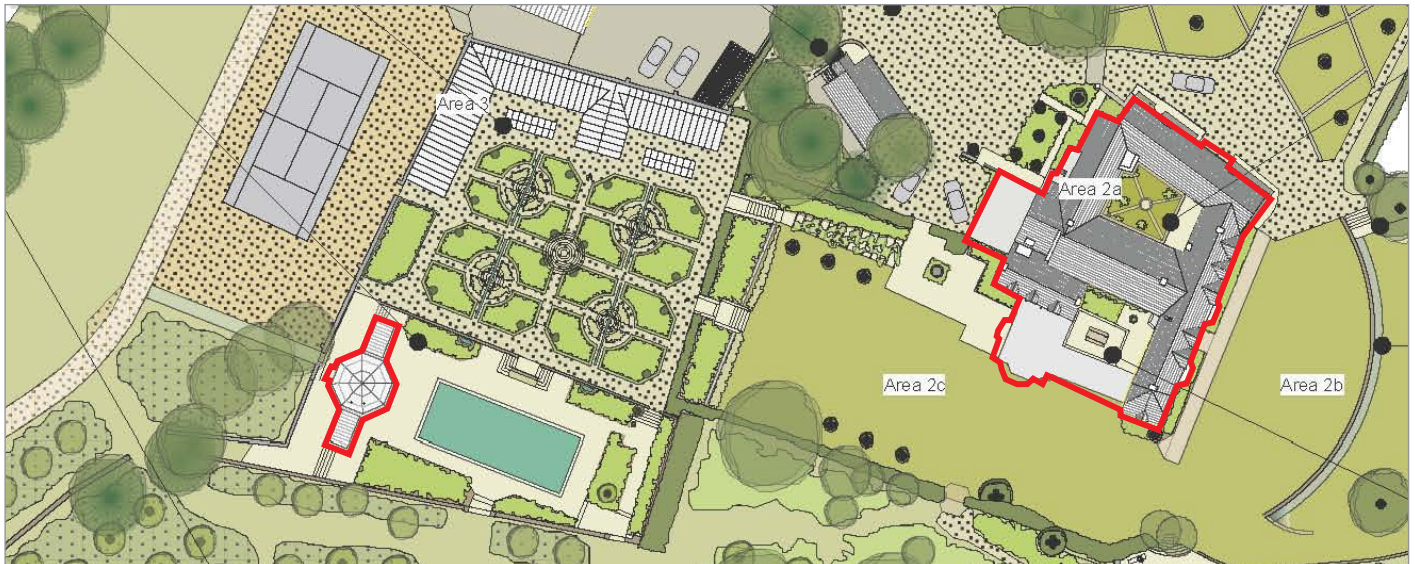


**ICOMB PLACE, GLOUCESTERSHIRE**

Planning support services and coordination/production of the Design and Access/Heritage Statement for a house extension and new pool house building for a Grade I Listed medieval manor house.



The proposals included.....

The house extension and pool house were designed by Tonic Architecture to be appropriate to their setting and to preserve the character of the Conservation Area, as well as the local setting to Icomb Place.

Following presentation to and support from Historic England, planning consent was granted by Cotswold District Council.

Architects  
Tonic Architecture

REF: MLA PFS 3